



REGIONAL SPECIALISED METEOROLOGICAL CENTRE-TROPICAL CYCLONES, NEW DELHI SPECIAL TROPICAL WEATHER OUTLOOK

DEMS-RSMC TROPICAL CYCLONES NEW DELHI DATED 14.07.2025

SPECIAL TROPICAL WEATHER OUTLOOK FOR NORTH INDIAN OCEAN (THE BAY OF BENGAL AND THE ARABIAN SEA) VALID FOR NEXT 168 HOURS ISSUED AT 2100 UTC OF 14.07.2025 BASED ON 1800 UTC OF 14.07.2025.

**SUB: (A) DEPRESSION OVER CENTRAL PARTS OF GANGETIC WEST BENGAL
(B) WELL MARKED LOW PRESSURE AREA OVER CENTRAL PARTS OF NORTH RAJASTHAN**

(A) DEPRESSION OVER CENTRAL PARTS OF GANGETIC WEST BENGAL

THE DEPRESSION OVER SOUTHEAST GANGETIC WEST BENGAL AND ADJOINING BANGLADESH MOVED WEST-NORTHWESTWARDS WITH SPEED OF 8 KMPH DURING PAST 6 HOURS AND LAY CENTERED AT 1800 UTC OF TODAY, THE 14TH JULY 2025 OVER CENTRAL PARTS OF GANGETIC WEST BENGAL, NEAR LAT. 23.5°N AND LONG. 88.0°E, ABOUT 110 KM NORTH-NORTHWEST OF KOLKATA (42807), 30 KM NORTH-NORTHEAST OF BURDWAN (42709) AND 160 KM EAST OF DHANBAD (42703).

IT IS LIKELY TO MOVE FURTHER WEST-NORTHWESTWARDS ACROSS GANGETIC WEST BENGAL AND JHARKHAND DURING NEXT 24 HOURS.

AS PER INSAT 3DS IMAGERY, AT 1800 UTC OF 14TH JULY 2025 SCATTERED TO BROKEN LOW/MEDIUM CLOUDS WITH EMBEDDED INTENSE TO VERY INTENSE CONVECTION OVER ODISHA, JHARKHAND, GANGETIC WEST BENGAL SOUTH BANGLADESH AND NORTH BAY OF BENGAL (MINIMUM CLOUD TOP TEMPERATURE IS 70-90 °C).

(B) WELL MARKED LOW PRESSURE AREA OVER CENTRAL PARTS OF NORTH RAJASTHAN

THE WELL MARKED LOW PRESSURE AREA OVER NORTHEAST RAJASTHAN & ADJOINING NORTHWEST MADHYA PRADESH MOVED WEST-NORTHWESTWARDS AND LAY OVER CENTRAL PARTS OF NORTH RAJASTHAN AT 1800 UTC OF TODAY, THE 14TH JULY, 2025.

IT IS LIKELY TO CONTINUE TO MOVE FURTHER SLOWLY WEST-NORTHWESTWARDS ACROSS RAJASTHAN DURING NEXT 2 DAYS.

AS PER INSAT 3DR IMAGERY, AT 1800 UTC OF 14TH JULY 2025 SCATTERED TO BROKEN LOW/MEDIUM CLOUDS WITH EMBEDDED INTENSE TO VERY INTENSE CONVECTION OVER RAJASTHAN WEST MADHYA PRADESH (MINIMUM CLOUD TOP TEMPERATURE IS 50-60 °C).

WARNINGS:

WIND WARNING:

- SQUALLY WIND SPEED REACHING 40-50 KMPH GUSTING TO 60 KMPH IS PREVAILING OVER NORTH BAY OF BENGAL, ALONG & OFF ODISHA, WEST BENGAL AND BANGLADESH COASTS FOR NEXT 24 HOURS. SQUALLY WIND SPEED REACHING 30-40 KMPH GUSTING TO 50 KMPH IS LIKELY OVER WEST BENGAL, JHARKHAND, AND NORTH ODISHA DURING NEXT 24 HOURS.
- SQUALLY WIND SPEED REACHING 30-40 KMPH GUSTING TO 50 KMPH IS LIKELY OVER NORTHEAST RAJASTHAN AND ADJOINING NORTHWEST MADHYA PRADESH FOR NEXT 24 HOURS AND OVER SOUTH RAJASTHAN & NEIGHBOURHOOD FOR SUBSEQUENT 24 HOURS.

SEA CONDITION:

- SEA CONDITION IS VERY LIKELY TO BE **ROUGH TO VERY ROUGH** OVER NORTH BAY OF BENGAL AND ALONG & OFF ODISHA, WEST BENGAL AND BANGLADESH COASTS DURING NEXT 24 HOURS.

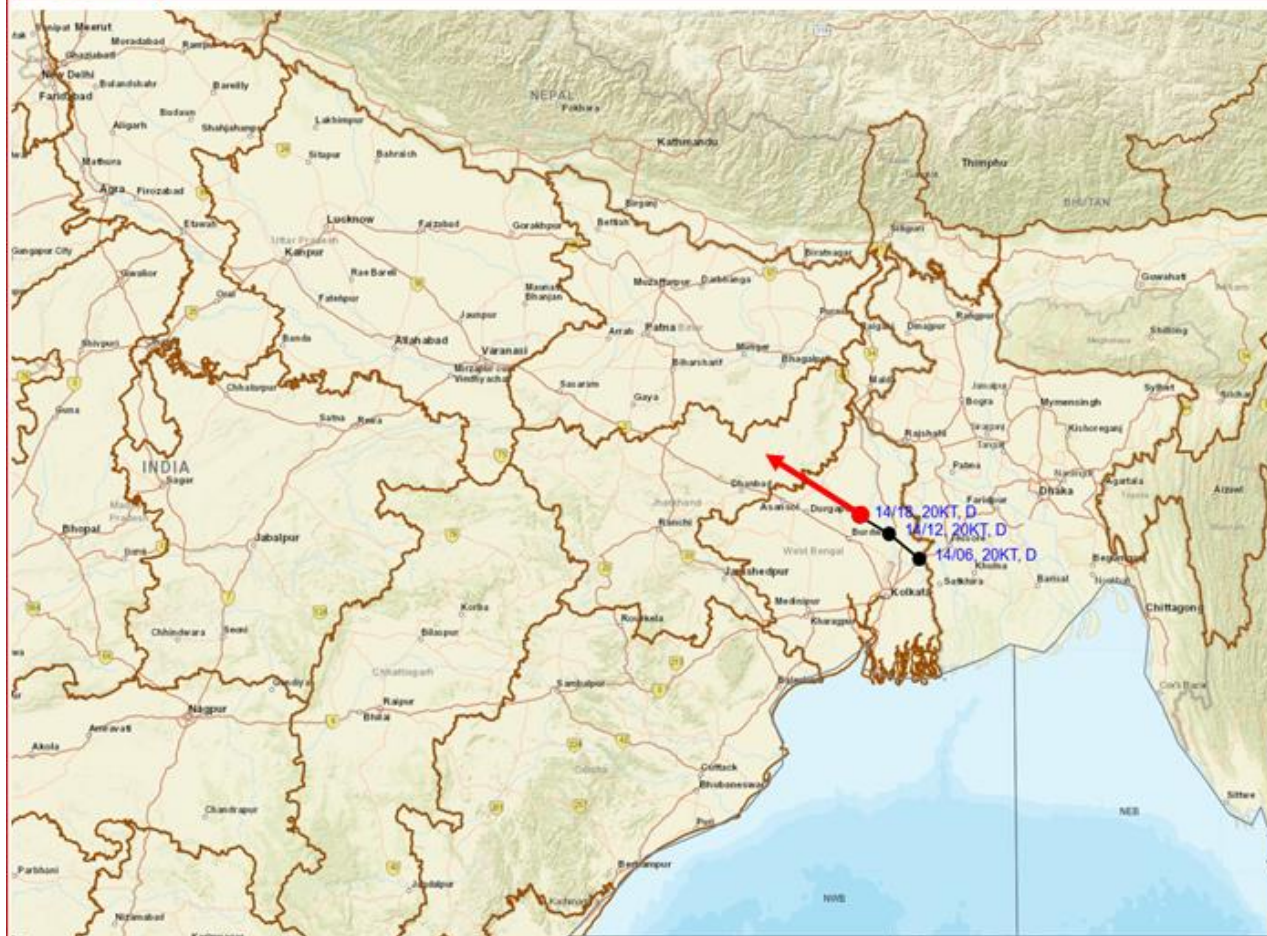
FISHERMEN WARNING:

- FISHERMEN ARE ADVISED NOT TO VENTURE INTO NORTH BAY OF BENGAL, ALONG AND OFF ODISHA, WEST BENGAL, AND BANGLADESH COASTS FOR NEXT 24 HOURS.

(UMASANKAR DAS)
SCIENTIST-D, NEW DELHI



OBSERVED AND FORECAST TRACK OF DEPRESSION OVER CENTRAL PARTS OF GANGETIC WEST BENGAL ON 1800 UTC (2330 Hrs. IST) OF 14th JULY 2025

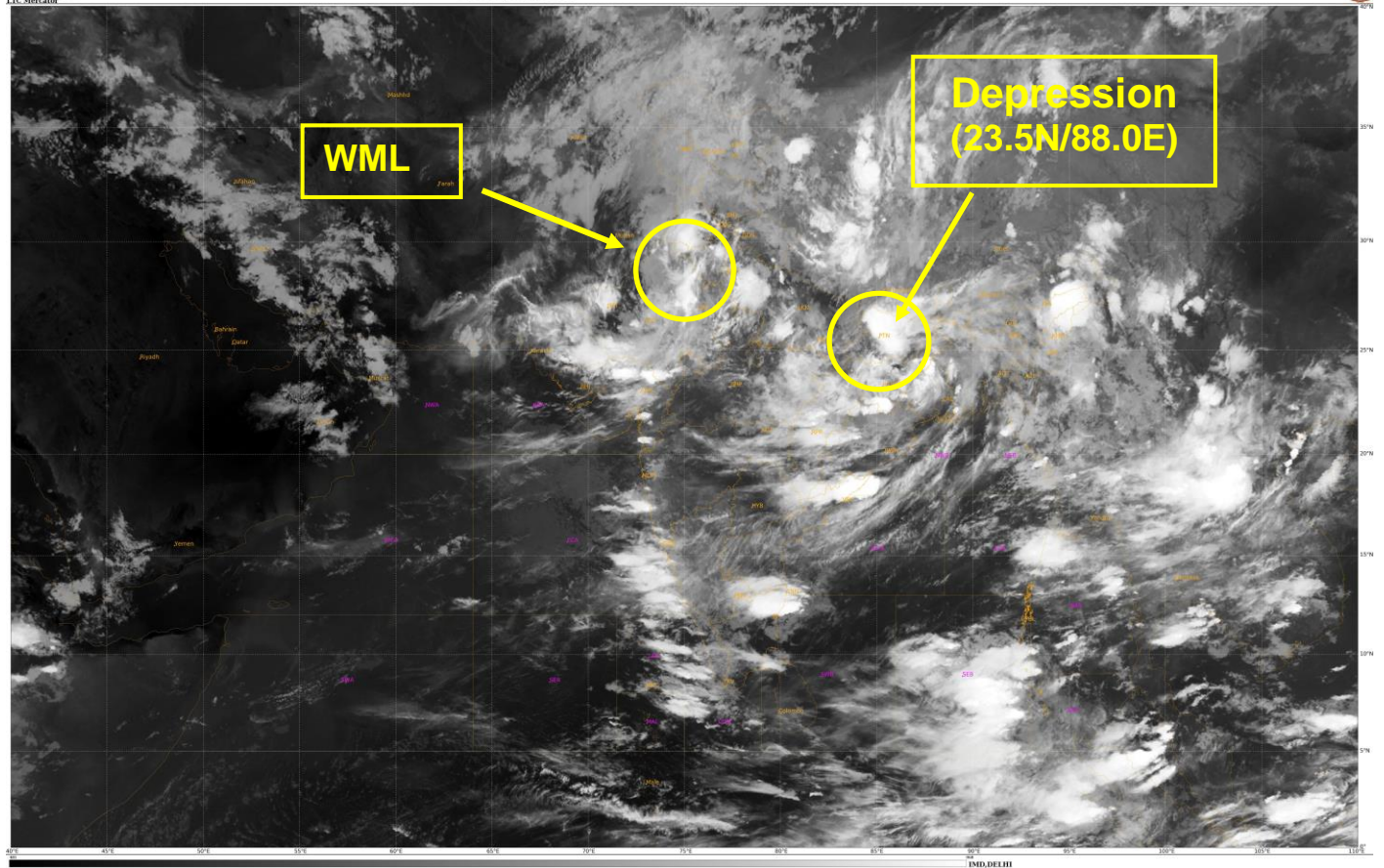


DATE/TIME	: IN UTC
IST	: UTC + 0530
KT	: NAUTICAL MILE S/HOUR = 1.85 KM/HOUR
LPA	: LOW PRESSURE AREA
WML	: WELL MARKED LOW PRESSURE AREA
D	: DEPRESSION (17-27 KT)
DD	: DEEP DEPRESSION (28-33 KT)
CS	: CYCLONIC STORM (34-47 KT)
SCS	: SEVERE CYCLONIC STORM (48-63 KT)
VSCS	: VERY SEVERE CYCLONIC STORM (64-89 KT)
ESCS	: EXTREMELY SEVERE CYCLONIC STORM (90-119 KT)
SuCS	: SUPER CYCLONIC STORM (≥ 120 KT)

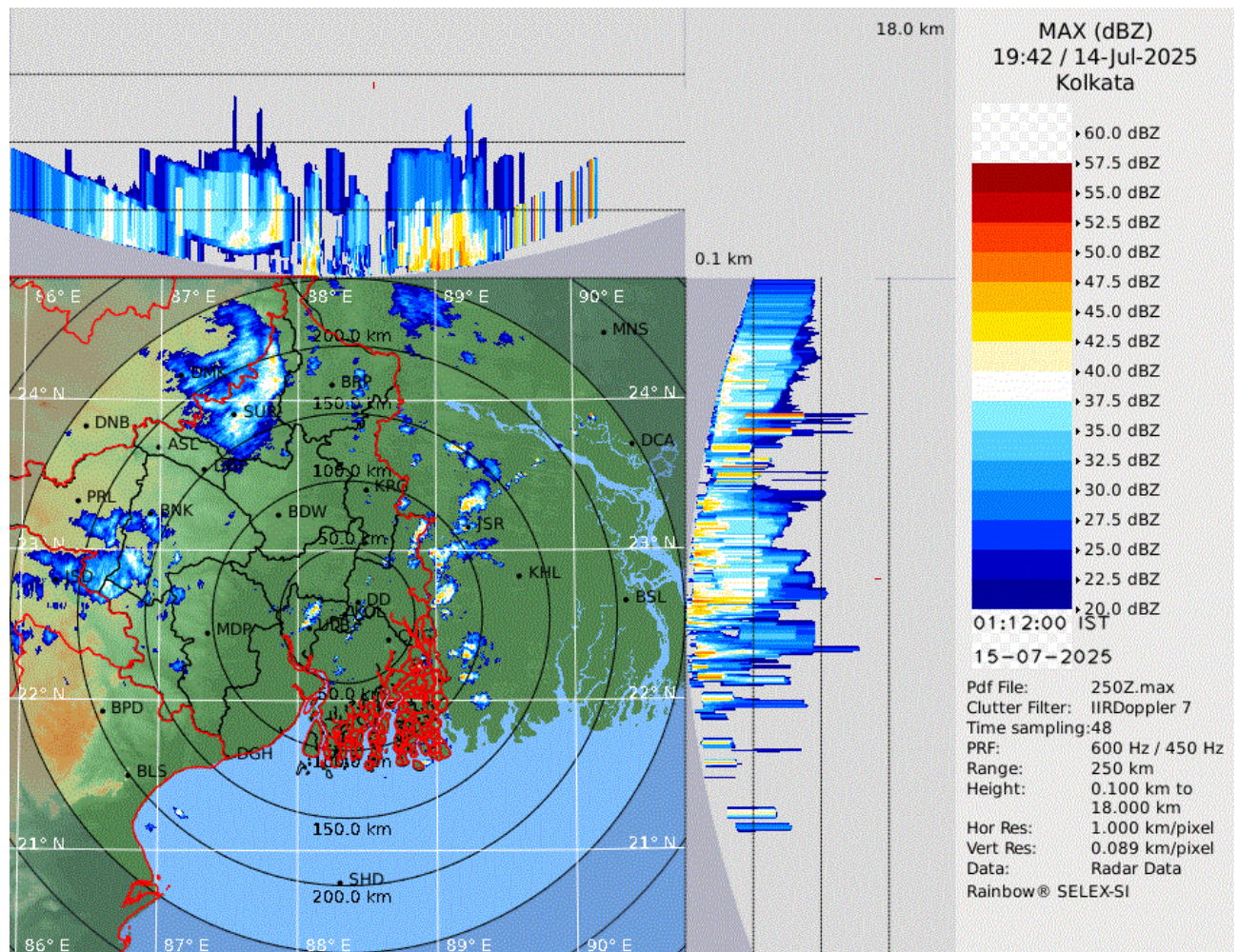
	LESS THAN 34 KT
	34-47 KT
	≥ 48 KT
	OBSERVED TRACK
	FORECAST TRACK
	CONE OF UNCERTAINTY

SAT : INSAT-3DR IMG
IMG_TIR1 10.8 um
L1C-Mercator

14-07-2025(1845 to 1912) GMT
13-07-2025(0015 to 0042) IST



Cloud distribution: (a) Isolated: <25%, Scattered:25-50%, Broken: 51-75%, Solid:>75%, Convection Intensity: (a) Weak: Cloud Top Temperature (CTT) >-25°C, (b) Moderate: CTT: - 25°C to -40°C, (c) Intense: CTT: - 41°C to -70°C and (d) Very Intense: : Less than -70°C
PROBABILITY OF CYCLOGENESIS (FORMATION OF DEPRESSION):NIL: 0%, LOW: 1-33%, , MODERATE: 34-66% AND HIGH: 67-100%
This is a guidance Bulletin for WMO/ESCAP Panel Member countries. Visit respective National websites for Country specific Bulletins



Latest Radar Image of DWR Kolkata

Fishermen Warning Graphics

